

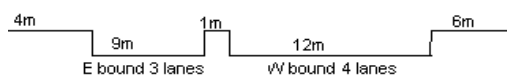
YEAR 2013

COVERAGE (B) STATION 4204

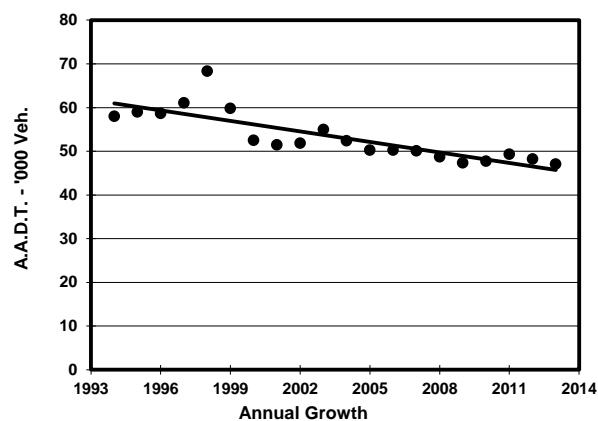
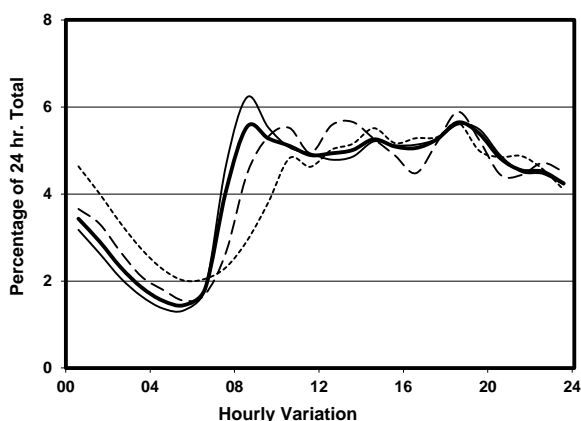
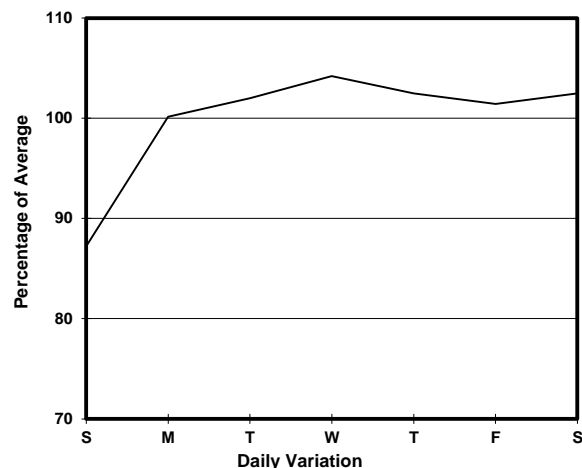
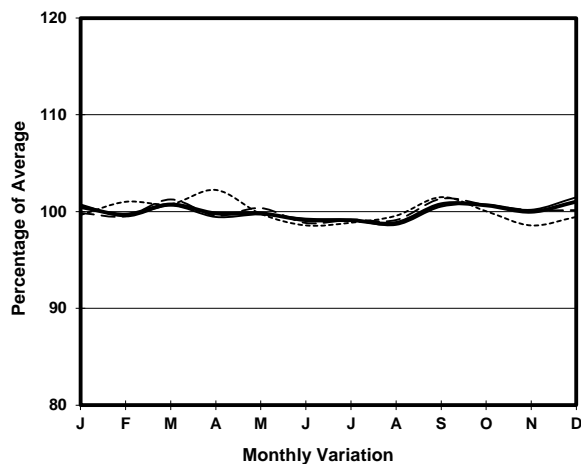
ROAD NETWORK MAJOR

ROAD TYPE PRIMARY DISTRIBUTOR

LINK ARGYLE ST & FO <K13> (from WATERLOO RD to YIM PO FONG ST)



1. TRAFFIC FLOW VARIATION AND GROWTH



2. TRAFFIC CHARACTERISTICS (BY DIRECTION)

Parameter	All - Day	Mon. - Fri.	Sat.	Sun.
EAST BOUND				
A.A.D.T.	24470	25220	25200	21210
R 12 / 24 - %	59.4	61	57.4	52.8
R 16 / 24 - %	78.5	80.1	76.1	72
AM Peak Hour	0800-0900	0800-0900	0900-1000	0900-1000
One-way flow at AM peak hour	1300	1510	1260	760
T - % (AM)	-	9.1	-	-
PM Peak Hour	1800-1900	1800-1900	1800-1900	1800-1900
One-way flow at PM peak hour	1380	1430	1440	1170
T - % (PM)	-	7	-	-
Prop.of commercial vehicles - 16 hr.	-	8.3	-	-
WEST BOUND				
A.A.D.T.	22610	23160	23370	20160
R 12 / 24 - %	63	64	62.5	58.6
R 16 / 24 - %	82.6	83.6	81.6	77.9
AM Peak Hour	0800-0900	0800-0900	0900-1000	0900-1000
One-way flow at AM peak hour	1310	1510	1320	820
T - % (AM)	-	7.9	-	-
PM Peak Hour	1800-1900	1800-1900	1800-1900	1800-1900
One-way flow at PM peak hour	1280	1280	1430	1160
T - % (PM)	-	5.3	-	-
Prop.of commercial vehicles - 16 hr.	-	7.4	-	-

3. OTHER INFORMATION AND COMMENT

4. Vehicle classification and occupancy - Monday to Friday

Time		Class of vehicle									
		Motor Cycle	Private Car	Taxi	Private LB	PLB	Goods veh.		Non Fr. Bus	Fr. Bus	
							Light	M & H		SD	DD
0700-0800	Pro	2.3	34.6	27.1	2.1	13.2	10.2	1.7	2.8	0.2	5.8
	Ocp	1.0	1.3	2.0	6.0	8.3	1.4	1.1	14.4	15.3	39.7
0800-0900 Peak hour	Pro	2.3	39.5	28.0	1.3	10.6	9.7	2.0	1.9	0.1	4.5
	Ocp	1.2	1.6	2.0	10.9	9.2	1.7	1.3	14.6	16.2	40.7
0900-1000	Pro	2.5	29.8	28.6	1.2	11.3	18.5	1.9	1.0	0.3	5.0
	Ocp	1.0	1.5	2.0	2.8	8.8	1.6	1.4	6.3	14.3	27.8
1000-1100	Pro	2.5	24.8	31.7	0.2	9.8	23.4	1.7	0.7	0.2	5.0
	Ocp	1.0	1.4	2.0	1.0	6.4	1.6	1.8	1.5	21.4	27.1
1100-1200	Pro	3.1	30.0	28.3	0.5	13.0	17.3	1.5	1.0	0.1	5.1
	Ocp	1.1	1.4	2.0	1.7	6.5	1.4	1.2	14.5	20.0	29.2
1200-1300	Pro	2.6	27.5	32.5	1.0	11.2	17.3	2.1	0.7	0.1	5.0
	Ocp	1.1	1.6	2.1	2.7	8.0	1.4	1.5	30.0	5.5	29.5
1300-1400	Pro	2.8	26.1	30.5	0.9	11.2	18.6	2.4	1.3	0.1	6.0
	Ocp	1.2	1.4	2.3	2.2	10.0	1.5	1.3	6.4	9.0	30.5
1400-1500	Pro	3.9	28.1	29.1	1.0	10.7	19.0	1.5	0.7	0.1	5.9
	Ocp	1.1	1.5	2.2	1.5	9.8	1.5	1.7	1.0	19.7	32.7
1500-1600	Pro	3.4	30.5	29.2	1.1	8.7	18.9	1.6	0.7	0.2	5.7
	Ocp	1.1	1.4	2.1	5.5	10.8	1.5	1.6	7.8	13.8	39.0
1600-1700	Pro	3.2	32.2	27.5	1.0	9.7	17.0	2.6	1.5	0.1	5.3
	Ocp	1.2	1.4	2.2	1.5	12.9	1.4	1.5	5.4	15.3	41.4
1700-1800	Pro	5.6	37.1	23.7	1.4	11.3	13.5	0.3	0.8	0.2	5.9
	Ocp	1.1	1.5	2.0	3.8	14.7	1.4	1.0	9.0	21.4	47.0
1800-1900	Pro	5.7	38.9	24.0	0.7	16.7	7.8	0.6	0.3	0.1	5.3
	Ocp	1.1	1.4	2.3	1.6	15.6	1.5	2.3	1.0	31.0	58.7
1900-2000	Pro	4.5	38.4	28.4	0.3	17.3	5.1	0.7	0.6	0.1	4.7
	Ocp	1.2	1.6	2.3	1.0	14.5	1.4	1.4	18.3	19.7	46.9
2000-2100	Pro	2.8	36.1	35.5	0.0	14.7	5.2	0.3	0.5	0.2	4.8
	Ocp	1.2	1.5	2.0	0.0	3.4	1.7	2.5	1.3	11.5	16.9
2100-2200	Pro	4.5	27.4	40.6	0.2	16.5	4.1	0.4	0.2	0.2	5.9
	Ocp	1.4	1.5	1.9	1.0	13.7	1.4	2.5	1.0	12.5	35.1
2200-2300	Pro	5.0	30.2	35.9	0.0	18.3	3.1	0.2	1.1	0.2	6.0
	Ocp	1.2	1.6	2.0	0.0	13.3	1.9	2.0	4.8	12.2	31.6
16 hours	Pro	3.5	32.3	29.8	0.8	12.7	13.0	1.4	1.0	0.2	5.3
	Ocp	1.1	1.5	2.1	4.2	10.6	1.5	1.5	10.2	15.6	36.3

Legend

- Pro.** Proportion of vehicles in % (Sum may not add up to 100% due to figure rounding)
Ocp. Average occupancy of vehicles
M&H Medium and Heavy